

FOUR POST CR18

HEAVY DUTY RUNWAY LIFTS

**18,000
POUNDS
CAPACITY**



Shown:
Model CR18NO-X
18,000 lbs. capacity

Engineering Excellence

Forward's U.S. engineers have over 29 years of combined experience designing automotive lifts for service and repair shops. Forward's philosophy is to own our designs rather than use someone else's off the shelf product.

Product Integrity

21st century design tools allow us to create, control and validate our designs to ensure maximum performance. Forward lifts are rigorously tested to meet quality and durability standards. All product families are proof load tested to 1½ times rated capacity and rigorously cycle tested.



**Four-Post
CR18NO-X
is Gold
Certified**

Engineered to perform... Built to last!



Forward CR18 18,000 lbs. capacity runway lifts

Single point latch release system releases all four column locks at one time.

The non-skid surface allows a sure grip for tires and a "sure foot" for technicians standing on the lift.

Multi-position lock components allow lift to be level at any lock position

Front wheel stops can easily be replaced by optional drive through ramps

All hydraulics and mechanical lifting components are concealed under the runway.

Shown: Model CR18NO-X 18,000 lbs. capacity Shown with optional rolling jacks, bolt-on alignment kit and work step

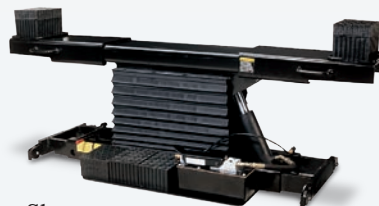
Optional internal airline connections allow two rolling bridge jacks to operate at the same time

Self chocking approach ramps engage in the rear when the lift is raised

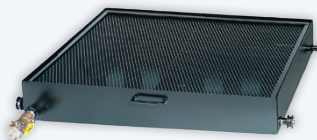


Optional Lift Accessories

- Bolt-On Alignment Kit
- Turning Radius Gauges
- Internal Air Line Kit
- Drive Through Ramps
- Rolling Bridge Jacks
- 30 gallon Oil Drain Pan
- 3-Phase Motors
- Power Unit Cover



Shown: 9,000 lbs. capacity rolling jack
PART # RJ901000BK



Shown: 30 gallon capacity rolling oil drain pan
PART # 991564



Shown: Bolt-on alignment kit
PART # CR18AK00BL

| Specifications | CR18 CR18-3 |
|----------------------------------|--|
| Max. Wheelbase | 194" (4928mm) 230" (5842mm) |
| Rise | 68" (1727mm) |
| Length Overall | 22' 11 3/16" (6990mm) 25' 11 3/16" (7904mm) |
| Width Overall | 11' 5 3/4" (3499mm) |
| Inside of Columns | 121 1/2" (3086mm) |
| Length Between Columns | 212" (5385mm) 248" (6299mm) |
| Height of Columns | 6' 5 3/4" (1975mm) |
| Width of Runways | 22" (559mm) |
| Height of Runways | 7 1/2" (191mm) |
| Width Between Runways (min./max) | 43" (1092mm)/ 46" (1168mm) |
| Lifting Capacity | 18,000 lbs. (8165kg) |
| Motor | 2 HP |
| Voltage Single Phase * | 208v-230v |
| Time of Full Rise | 105 seconds |
| Min. Bay Size | 16' x 27' (4877 x 8230mm) 16' x 30' (4877 x 9144mm) |

* Optional 3-phase electrical available.
Specifications subject to change without notice or liability



Forward Lift
996 Industrial Drive
Madison, IN 47250

Phone: 800.423.1722
Fax: 812.273.7329
www.forwardlift.com



Li# CR18_2012.04

©2012 Forward Lift, Forward Lift is a brand of Vehicle Service Group, A Dover Company. All rights reserved. Unless otherwise indicated, Forward Lift, Vehicle Service Group, Dover and all other trademarks are property of Dover Corporation and its affiliates.